

DRILL SCHEDULE
ALL HOLES TO BE #6-32 TAP - THRU

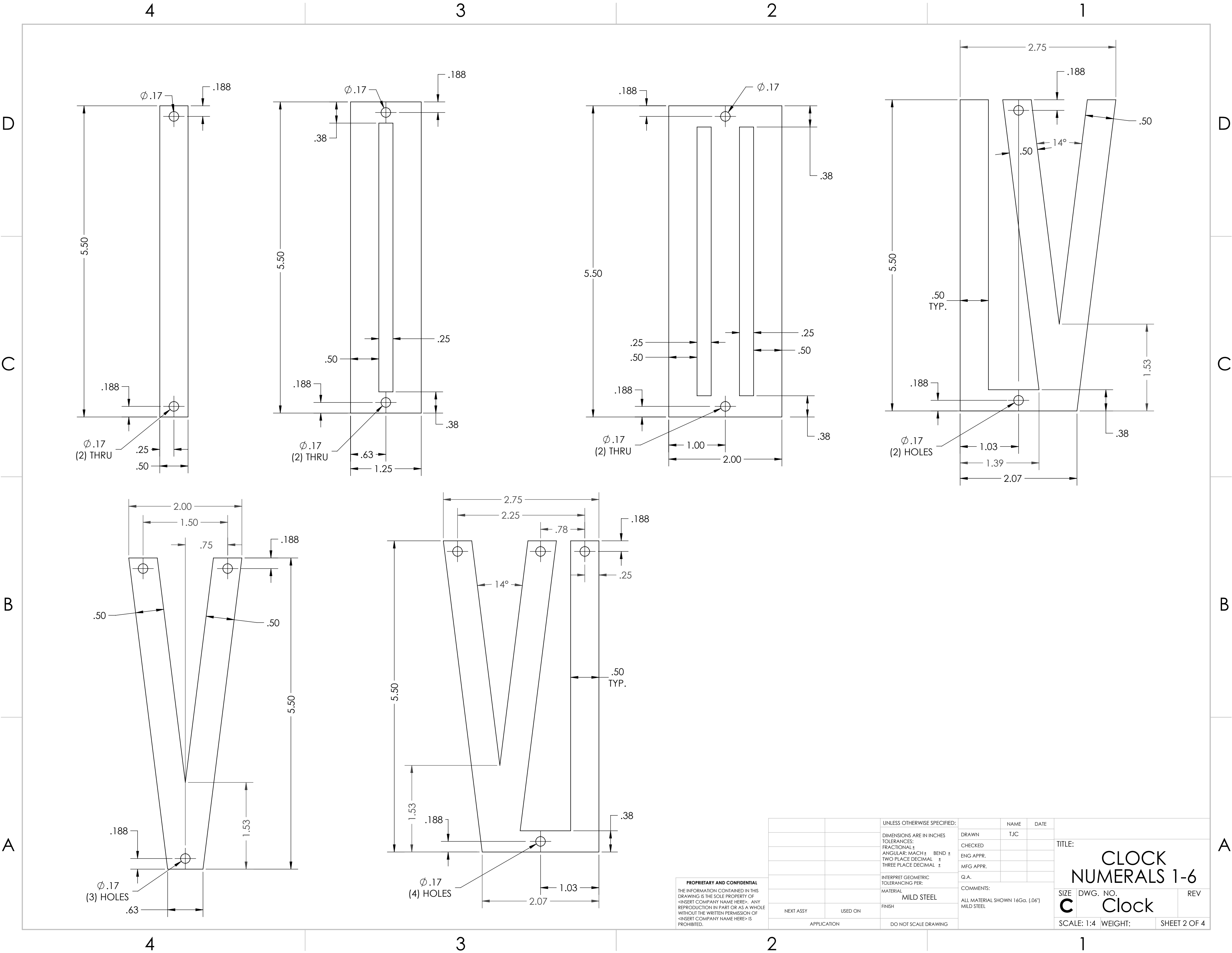
	X	Y
HOLE 1	0	17.688
HOLE 2	8.844	15.318
HOLE 3	15.318	8.844
HOLE 4	17.688	0.000
HOLE 5	15.318	-8.844
HOLE 6	9.491	-14.944
HOLE 7	8.196	-15.692
HOLE 8	1.465	-17.688
HOLE 9	0.000	-17.688
HOLE 10	-0.783	-17.688
HOLE 11	-7.243	-16.242
HOLE 12	-8.542	-15.492
HOLE 13	-9.518	-14.928
HOLE 14	-14.194	-10.790
HOLE 15	-14.942	-9.495
HOLE 16	-15.693	-8.194
HOLE 17	-17.688	0.000
HOLE 18	-17.688	1.435
HOLE 19	-15.562	8.407
HOLE 20	-15.062	9.273
HOLE 21	-9.525	14.902
HOLE 22	-8.286	15.625
HOLE 23	0.000	12.563
HOLE 24	6.281	10.879
HOLE 25	10.879	6.281
HOLE 26	12.562	0.000
HOLE 27	10.879	-6.281
HOLE 28	-6.281	-10.879
HOLE 29	0.000	-12.563
HOLE 30	-6.281	-10.879
HOLE 31	-10.879	-6.281
HOLE 32	-12.562	0.000
HOLE 33	-12.562	1.434
HOLE 34	-11.123	5.845
HOLE 35	-10.623	6.711
HOLE 36	-6.966	10.466
HOLE 37	-5.722	11.183

MATERIAL: 3/16" 6061-T6 ALUMINUM

PROPRIETARY AND CONFIDENTIAL
THE INFORMATION CONTAINED IN THIS
DRAWING IS THE SOLE PROPERTY OF
<INSERT COMPANY NAME HERE>. ANY
REPRODUCTION IN PART OR AS A WHOLE
WITHOUT THE WRITTEN PERMISSION OF
<INSERT COMPANY NAME HERE> IS
PROHIBITED.

		UNLESS OTHERWISE SPECIFIED:		NAME	DATE	TITLE: <div>CLOCK FACE</div>	
		DIMENSIONS ARE IN INCHES TOLERANCES: FRACTIONAL ± ANGULAR: MACH ± BEND ± TWO PLACE DECIMAL ± THREE PLACE DECIMAL ±	DRAWN	TJC			
			CHECKED				
			ENG APPR.				
			MFG APPR.				
			Q.A.				
		INTERPRET GEOMETRIC TOLERANCING PER:	COMMENTS:			SIZE DWG. NO. REV <div>C Clock</div>	
		MATERIAL 6061-T6 AL.					
		FINISH					
NEXT ASSY	USED ON						
APPLICATION		DO NOT SCALE DRAWING					
			SCALE: 1:4				

SCALE: 1:4 WEIGHT: SHEET 1 OF 4



PROPRIETARY AND CONFIDENTIAL
THE INFORMATION CONTAINED IN THIS
DRAWING IS THE SOLE PROPERTY OF
<INSERT COMPANY NAME HERE>. ANY
REPRODUCTION IN PART OR AS A WHOLE
WITHOUT THE WRITTEN PERMISSION OF
<INSERT COMPANY NAME HERE> IS
PROHIBITED.

		UNLESS OTHERWISE SPECIFIED:		NAME	DATE	TITLE: <div>CLOCK NUMERALS 1-6</div>
		DIMENSIONS ARE IN INCHES TOLERANCES: FRACTIONAL ± ANGULAR: MACH ± BEND ± TWO PLACE DECIMAL ± THREE PLACE DECIMAL ±	DRAWN	TJC		
			CHECKED			
			ENG APPR.			
			MFG APPR.			
		INTERPRET GEOMETRIC TOLERANCING PER:	Q.A.			
		MATERIAL MILD STEEL	COMMENTS:			
			ALL MATERIAL SHOWN 16Ga. (.06")			
		FINISH	MILD STEEL			
NEXT ASSY	USED ON					
APPLICATION		DO NOT SCALE DRAWING				
			SIZE	DWG. NO.	REV	
			C	Clock		
			SCALE: 1:4 WEIGHT:		SHEET 2 OF 4	

D

C

B

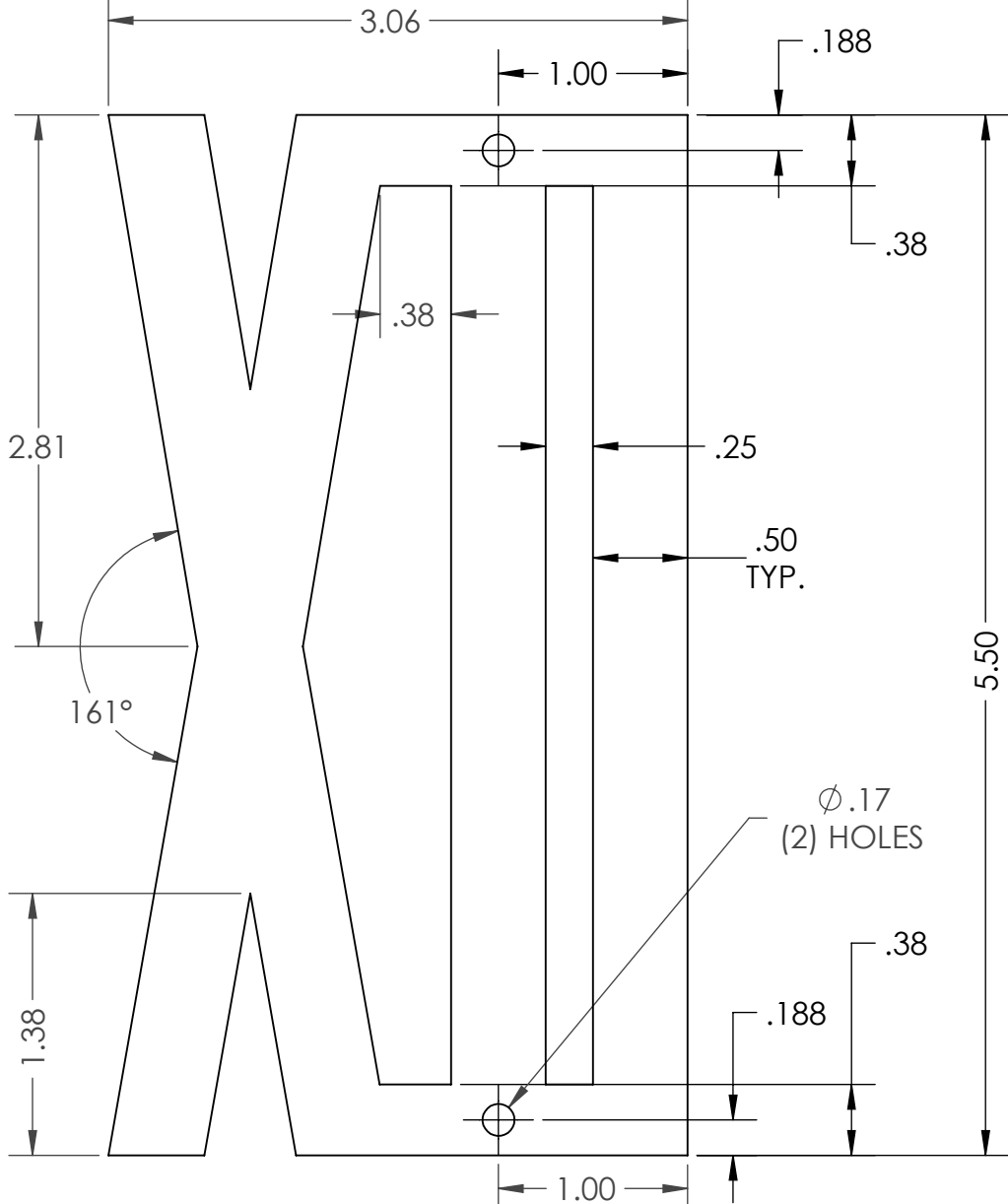
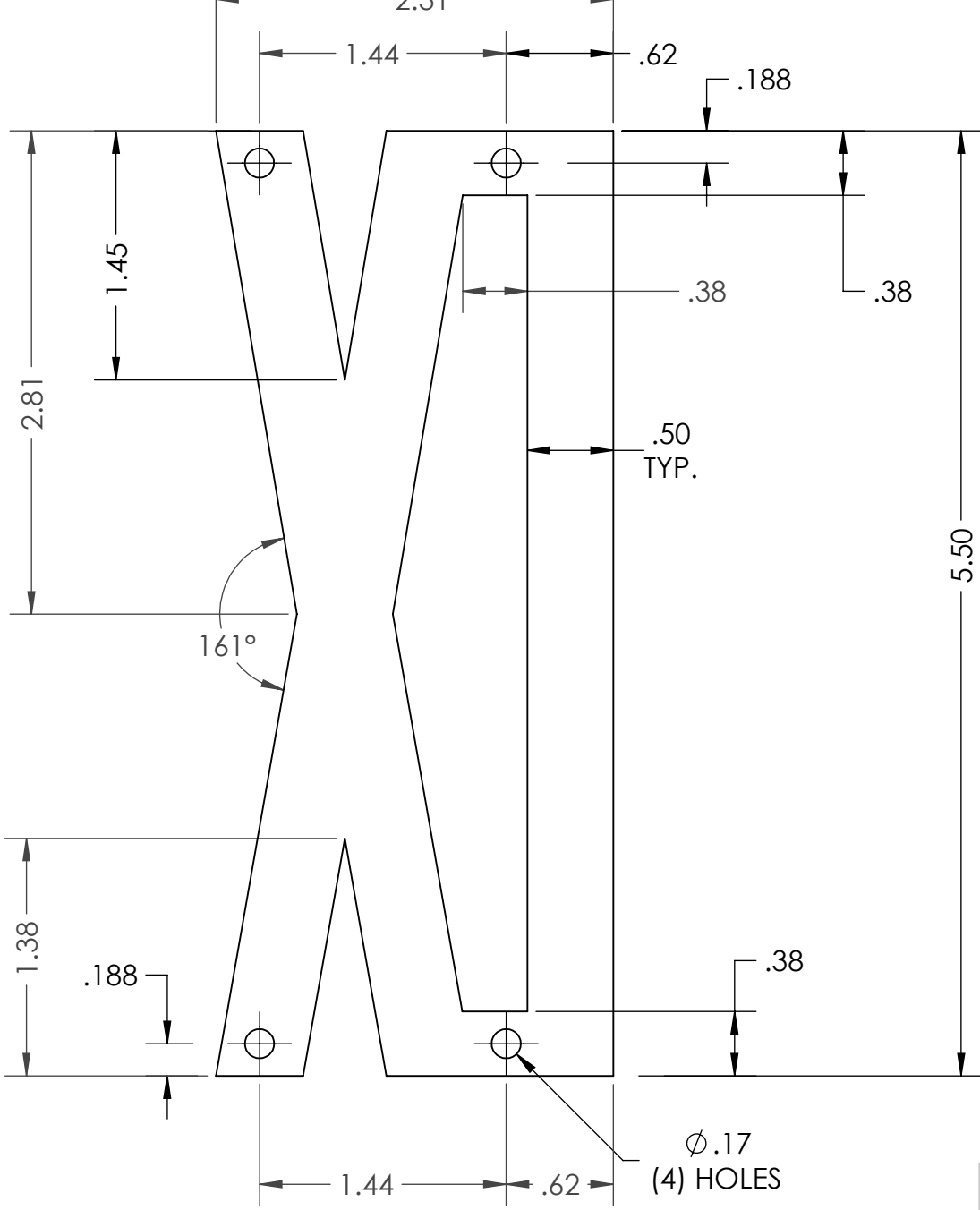
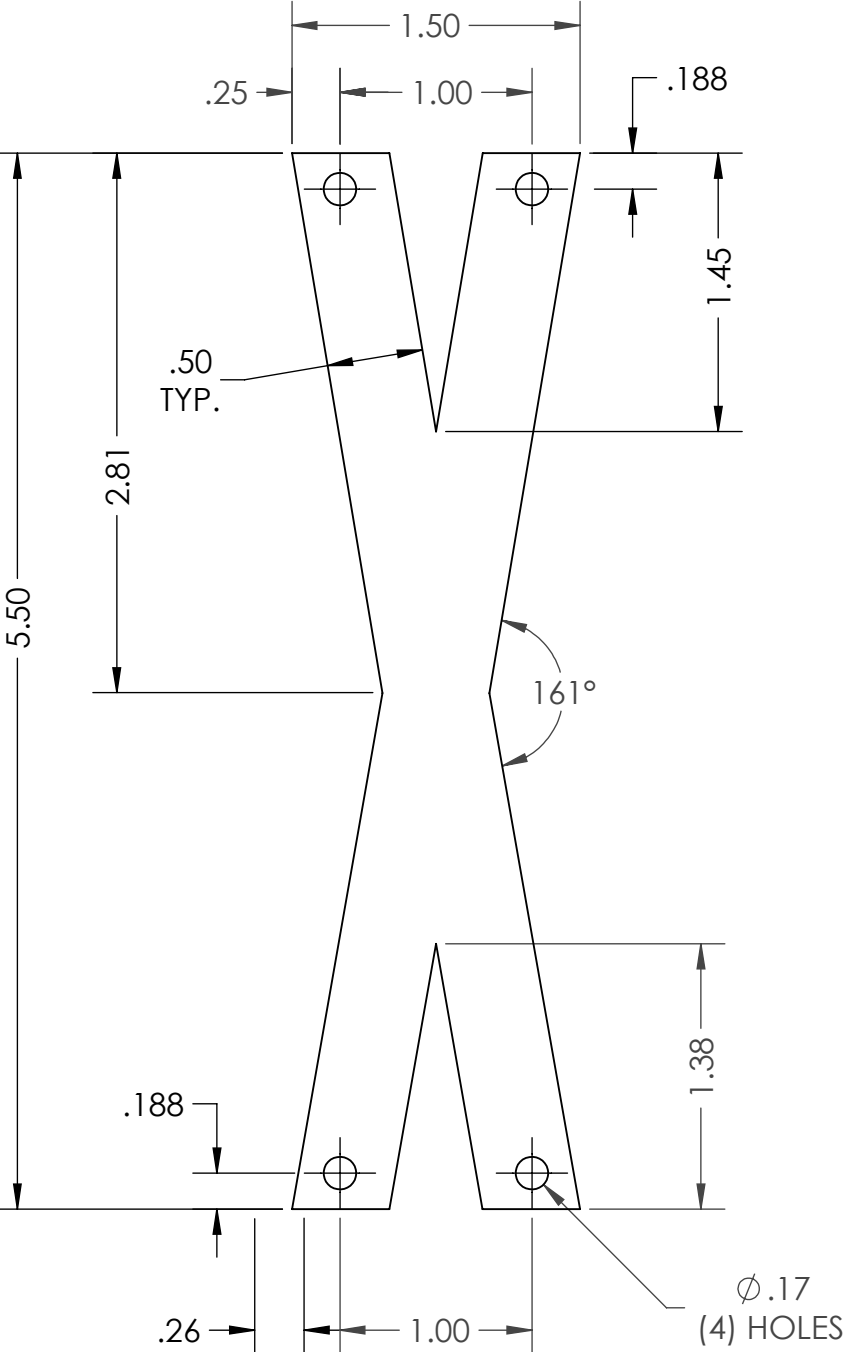
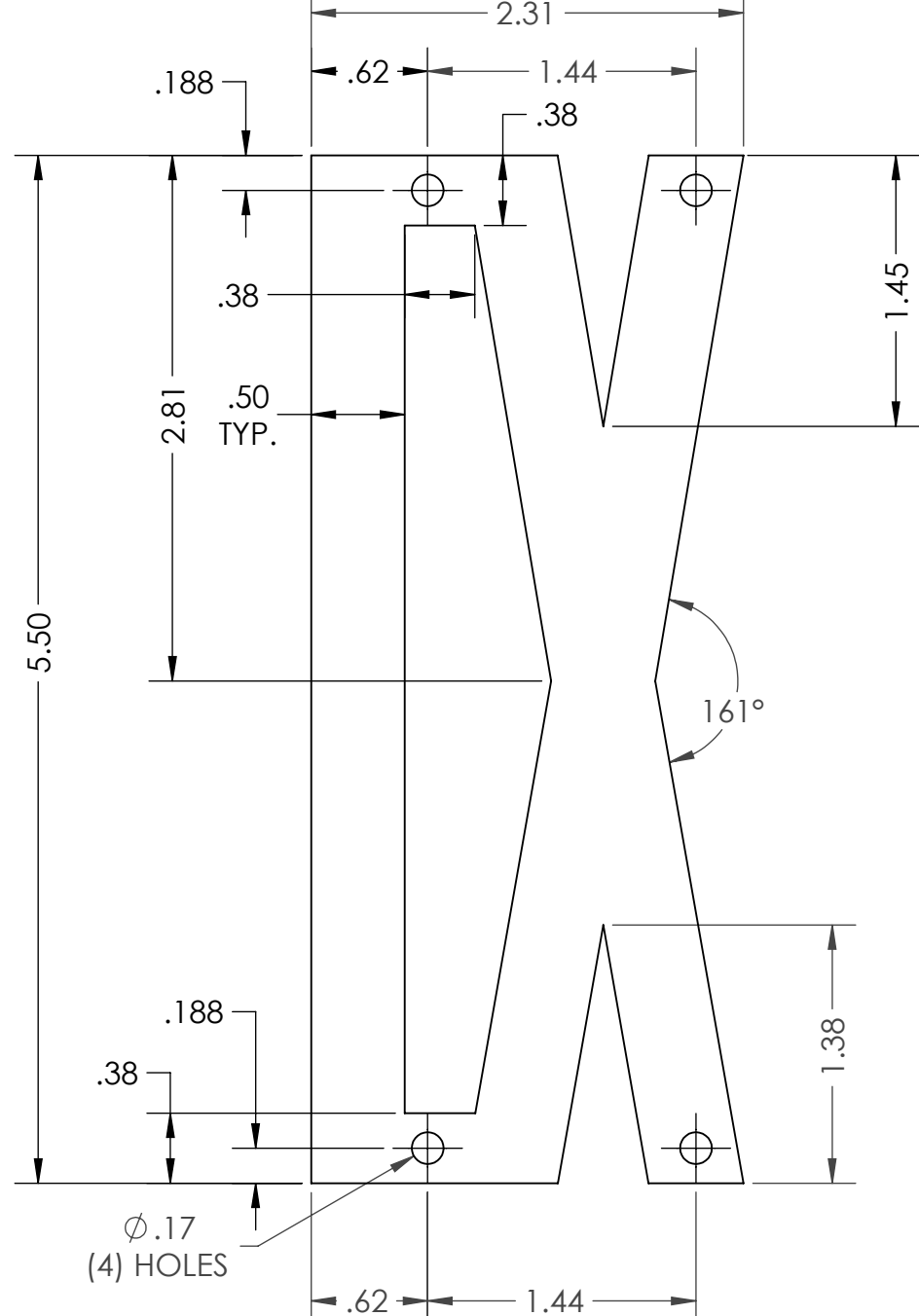
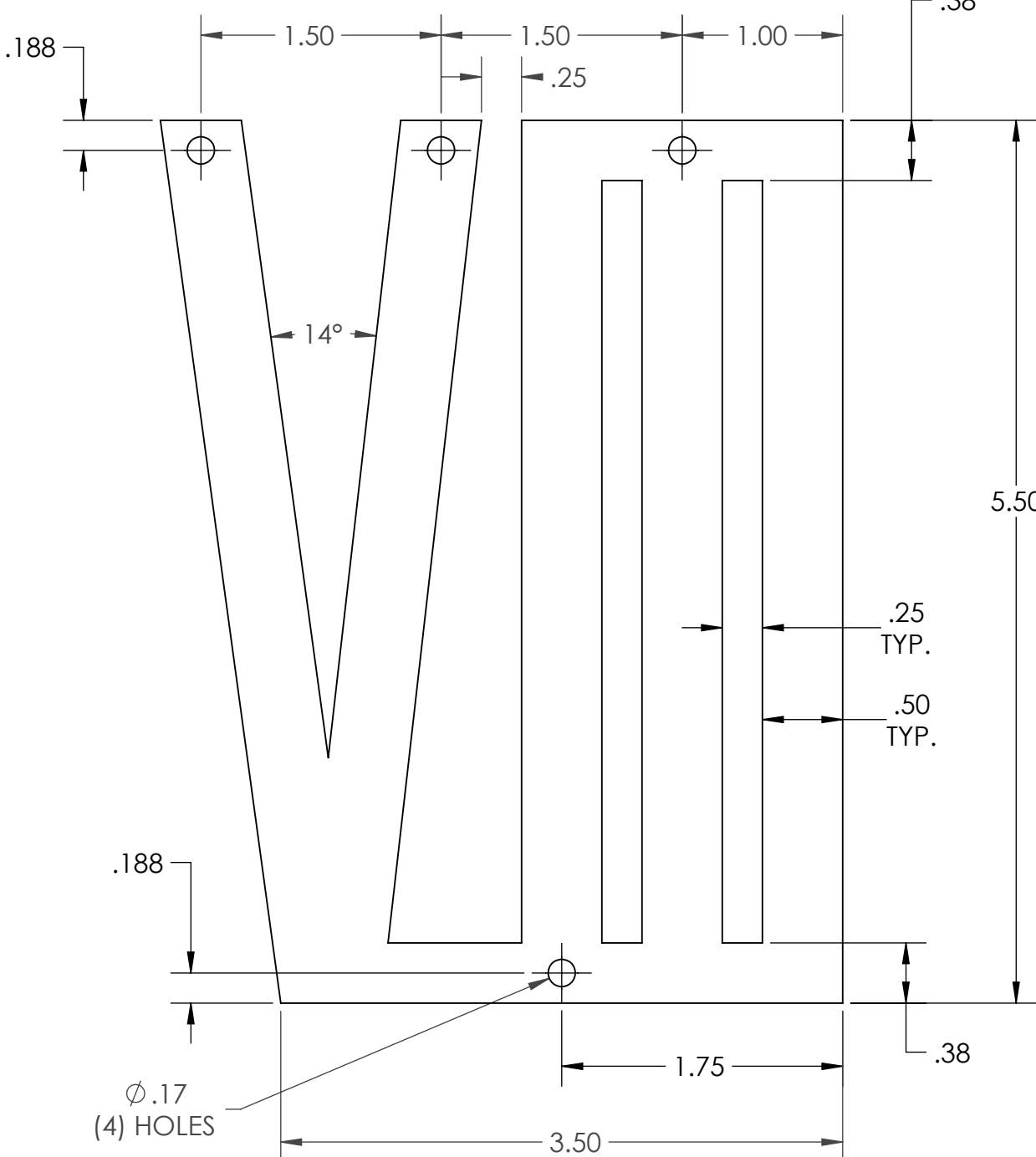
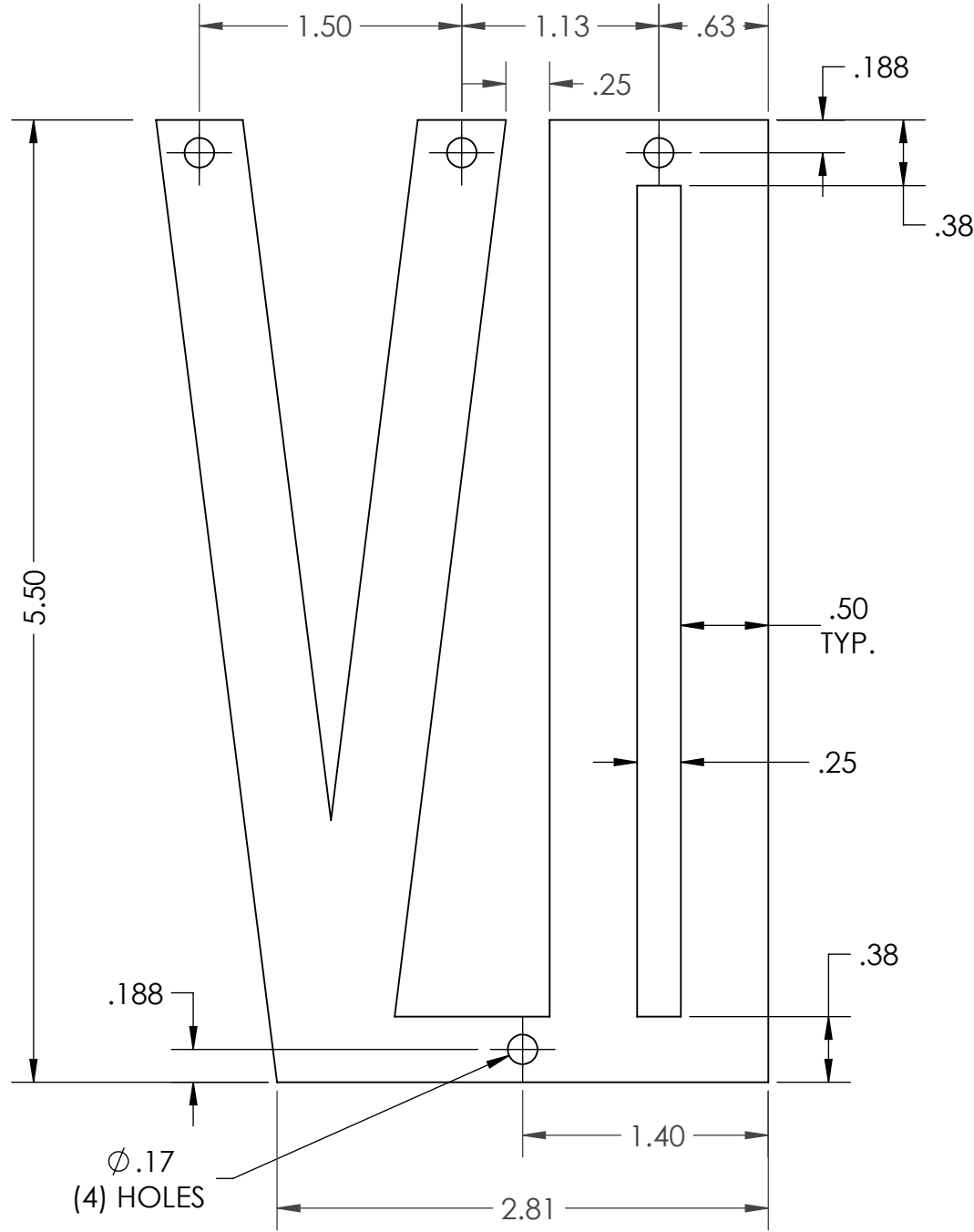
A

D

C

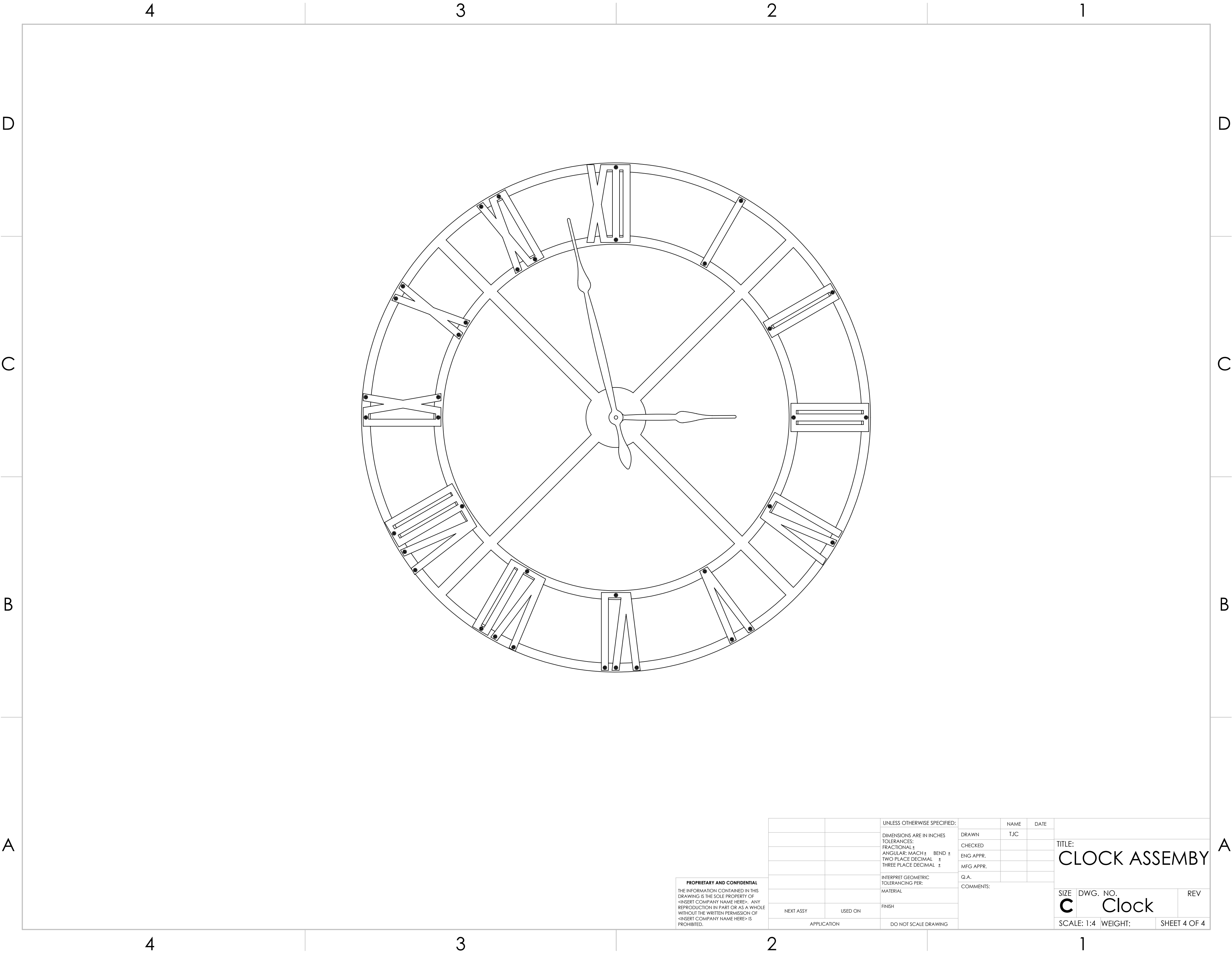
B

A



PROPRIETARY AND CONFIDENTIAL
THE INFORMATION CONTAINED IN THIS
DRAWING IS THE SOLE PROPERTY OF
<INSERT COMPANY NAME HERE>. ANY
REPRODUCTION IN PART OR AS A WHOLE
WITHOUT THE WRITTEN PERMISSION OF
<INSERT COMPANY NAME HERE> IS
PROHIBITED.

		UNLESS OTHERWISE SPECIFIED:		NAME		DATE		TITLE: <div>CLOCK NUMERALS 7-12</div>	
		DIMENSIONS ARE IN INCHES TOLERANCES: FRACTIONAL ± ANGULAR: MACH ± BEND ± TWO PLACE DECIMAL ± THREE PLACE DECIMAL ±		DRAWN		TJC			
				CHECKED					
				ENG APPR.					
				MFG APPR.					
				Q.A.					
		INTERPRET GEOMETRIC TOLERANCING PER:		COMMENTS:					
		MATERIAL MILD STEEL		ALL MATERIAL SHOWN 16Ga. (.06") MILD STEEL					
		FINISH							
NEXT ASSY		USED ON						SIZE DWG. NO. REV	
								C Clock	
APPLICATION		DO NOT SCALE DRAWING						SCALE: 1:4 WEIGHT: SHEET 3 OF 4	



PROPRIETARY AND CONFIDENTIAL
THE INFORMATION CONTAINED IN THIS
DRAWING IS THE SOLE PROPERTY OF
<INSERT COMPANY NAME HERE>. ANY
REPRODUCTION IN PART OR AS A WHOLE
WITHOUT THE WRITTEN PERMISSION OF
<INSERT COMPANY NAME HERE> IS
PROHIBITED.

		UNLESS OTHERWISE SPECIFIED:		NAME	DATE	TITLE: CLOCK ASSEMBLY	
		DIMENSIONS ARE IN INCHES	DRAWN	TJC			
		TOLERANCES:	CHECKED				
		FRACTIONAL \pm	ENG APPR.				
		ANGULAR: MACH \pm BEND \pm	MFG APPR.				
		TWO PLACE DECIMAL \pm	Q.A.			SIZE	DWG. NO.
		THREE PLACE DECIMAL \pm	COMMENTS:			C	Clock
		INTERPRET GEOMETRIC TOLERANCING PER:				SCALE: 1:4	WEIGHT:
		MATERIAL				SHEET 4 OF 4	
		FINISH					
		DO NOT SCALE DRAWING					
NEXT ASSY	USED ON						
APPLICATION							