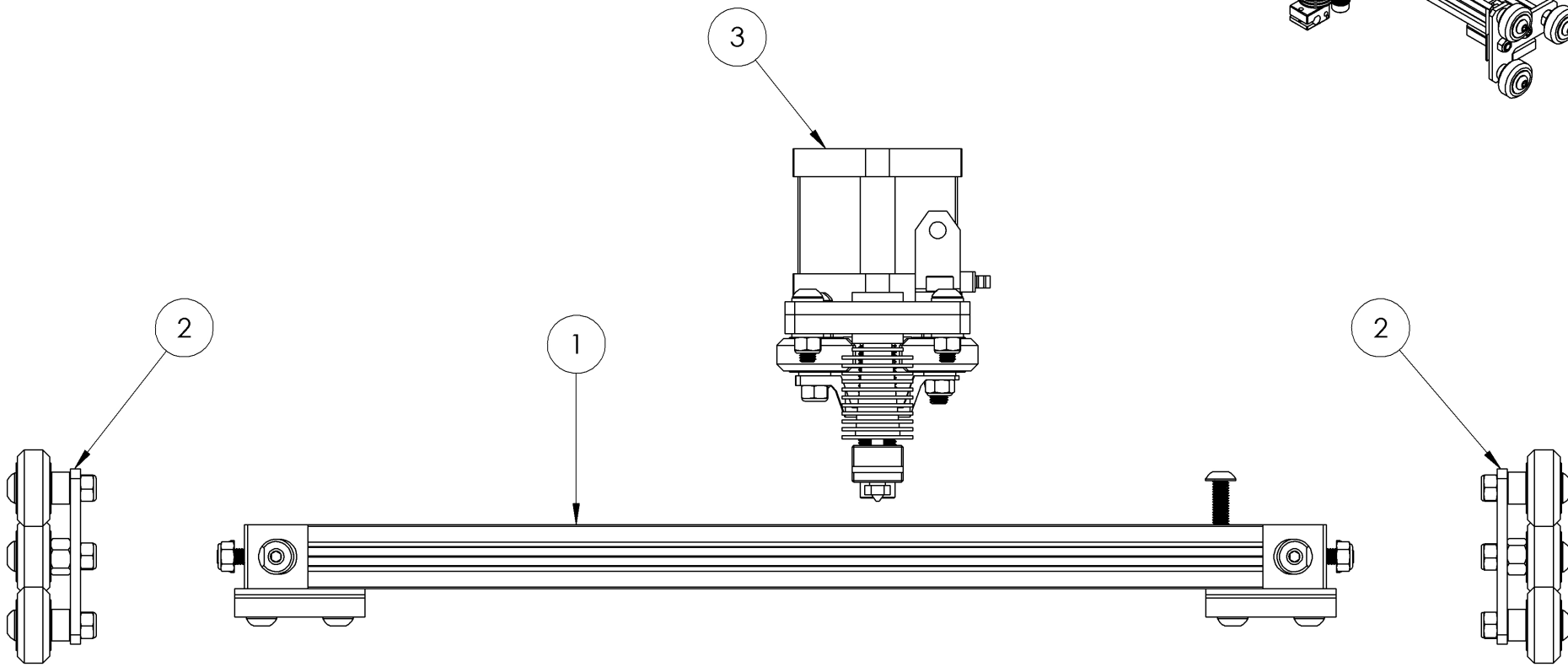
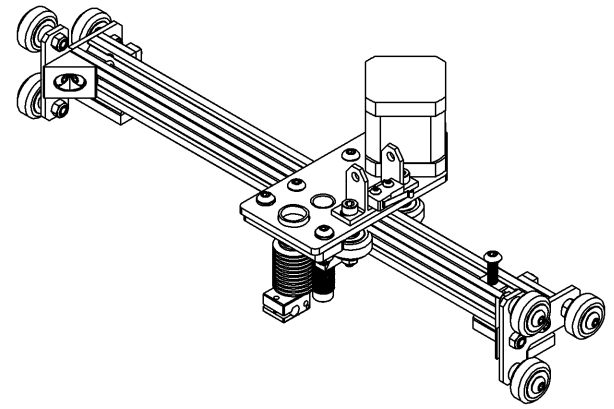


ITEM NO.	PART NUMBER	DESCRIPTION	QTY.
1	X-101	Extrusion Assembly	1
2	X-102	Wheel Mount Assembly	2
3	X-103	Hot End Assembly	1



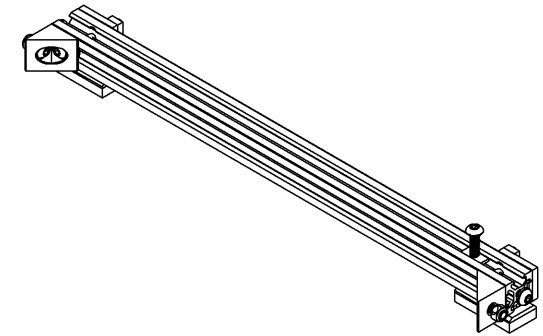
TITLE:			
x axis assembly			
SIZE	DWG. NO.		REV
A	X-100		A
DRAWN	DATE	SCALE: 1:2	SHEET 1:1
A. S.	5/11/16		

B



B

17	H-015	DROP IN M5 T-NUT	2
16	H-016	M5 HEX NUT	2
15	H-013	M3x10 BUTTON HEAD	4
14	H-004	M5x8 BUTTON HEAD	2
13	H-005	M5x10 BUTTON HEAD	2
12	H-007	M5x16 BUTTON HEAD	2
11	H-011	M5 FLAT WASHER	4
10	H-012	M5x.8 NYLON INSERT LOCKNUT	2
9	H-006	M5x12 BUTTON HEAD	6
8	H-008	M5x20 BUTTON HEAD	1
7	H-001	M5 T-NUT	7
6	PX-006	ANGLE CONNECTOR	2
5	PX-005	Z NUT TRAP STOPPER	2
4	PX-004	Z NUT TRAP	2
3	PX-003	BELT CLAMPER	2
2	PX-002_rB	BELT CLAMP BASE	2
1	X-003	V-SLOT	1
ITEM NO.	PART NUMBER	DESCRIPTION	QTY.



A

TITLE:

extrusion assembly

SIZE

A

DWG. NO.

X-101

REV

ADRAWN
A. S.DATE
5/11/16

SCALE: 1:2

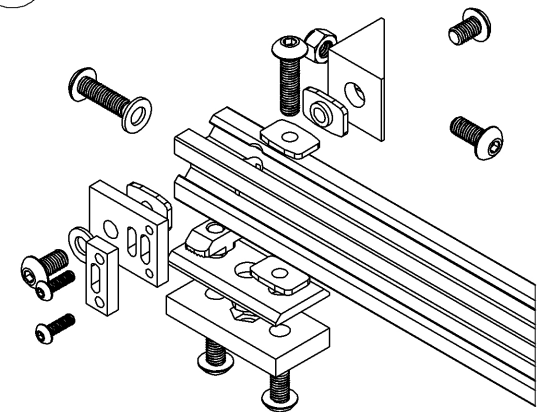
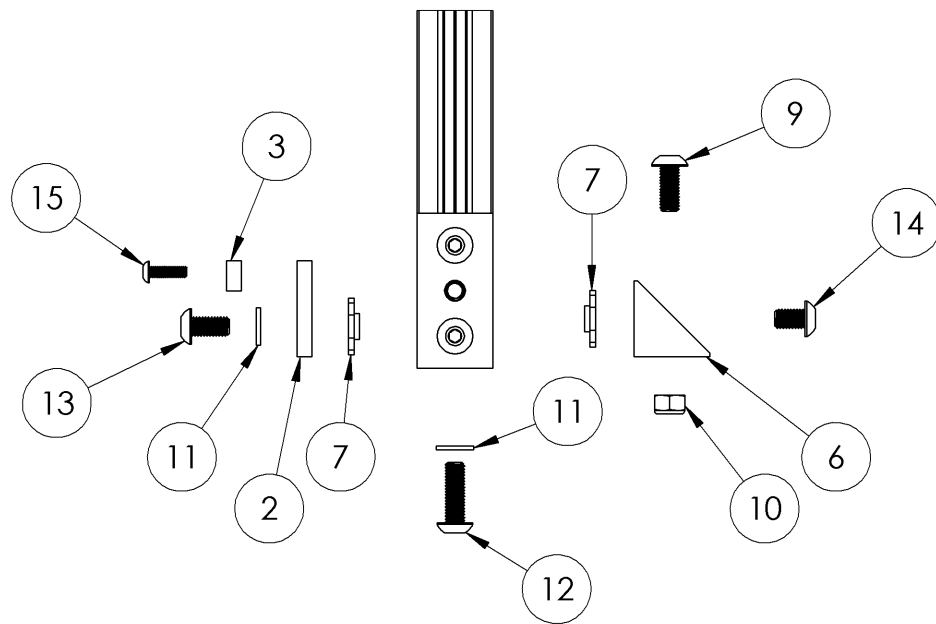
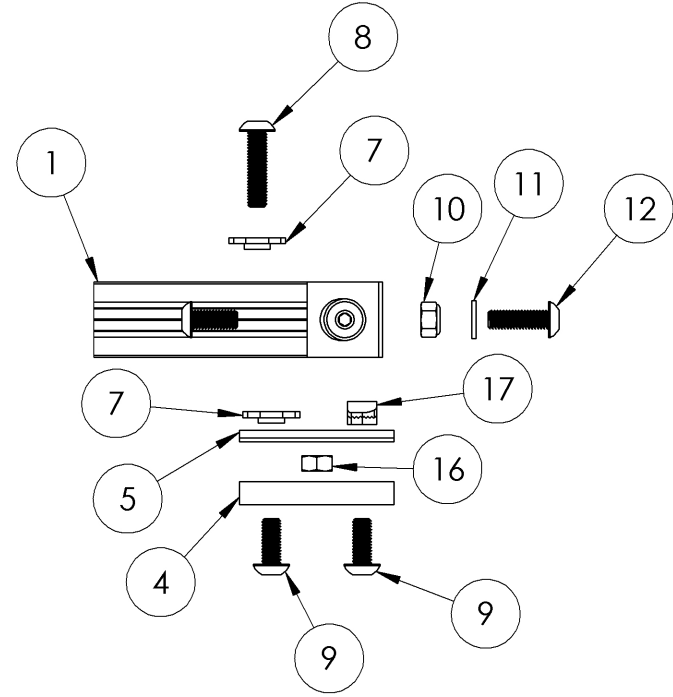
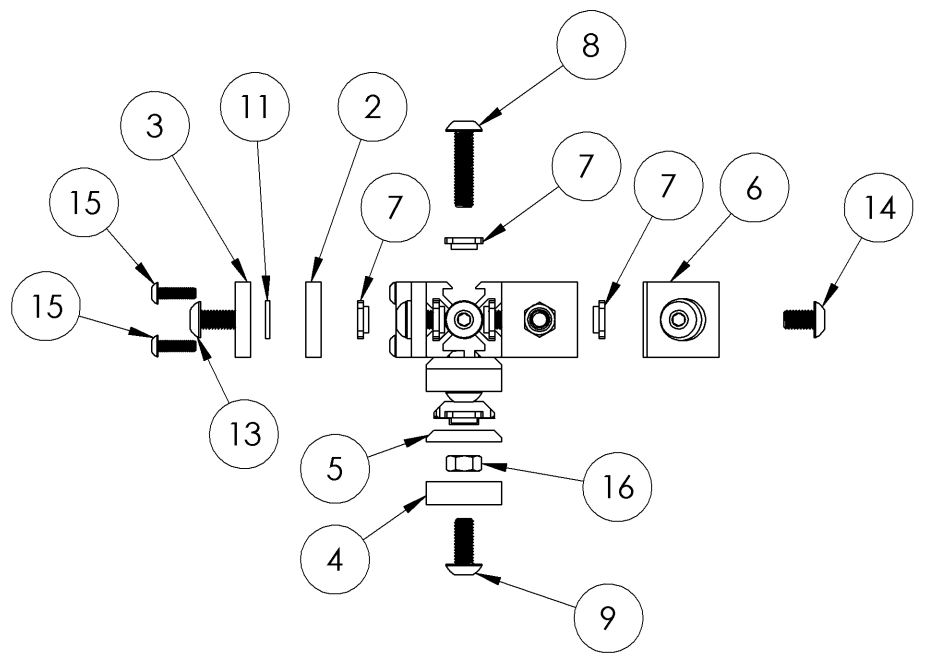
SHEET 1:2

2

1

B

B



TITLE: extrusion assembly			
SIZE A	DWG. NO. X-101		REV A
DRAWN A. S.	DATE 5/11/16	SCALE: 1:2	SHEET 2:2

A

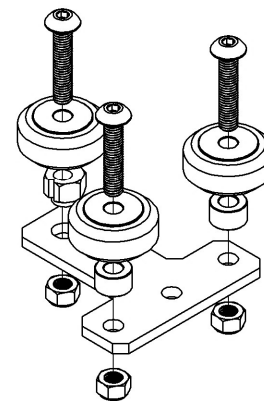
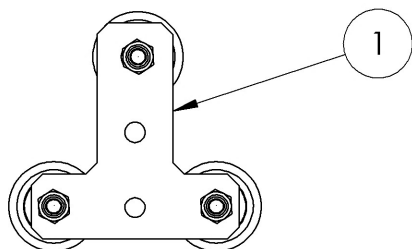
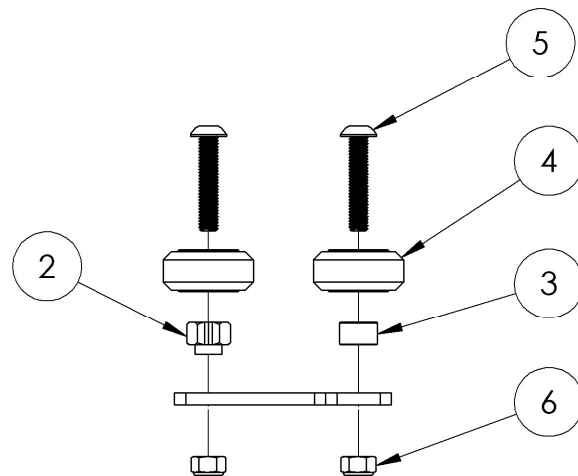
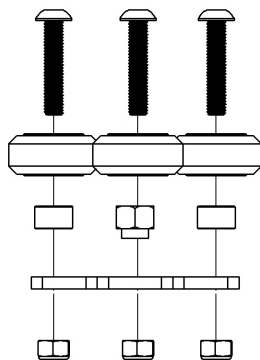
A

2

1

B

B



A

A

6	H-012	M5x.8 NYLON INSERT LOCKNUT	3
5	H-009	M5x25 BUTTON HEAD	3
4	H-014	SOLID V WHEEL KIT	3
3	H-003	6mm ALUMINUM SPACER	2
2	H-002	ECCENTRIC SPACER	1
1	X-002_rB	WHEEL MOUNT	1
ITEM NO.	PART NUMBER	DESCRIPTION	QTY.

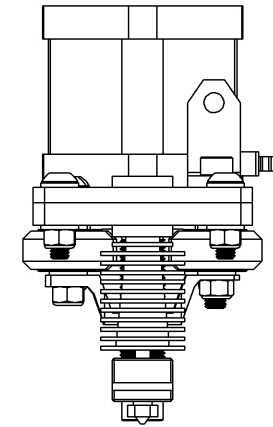
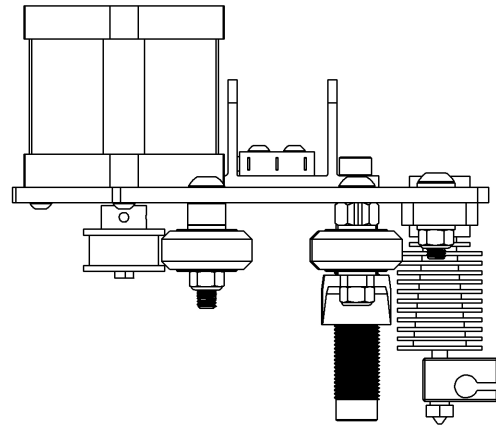
TITLE: wheel mount assembly			
SIZE A	DWG. NO. X-102		REV A
DRAWN A. S.	DATE 5/11/16	SCALE: 1:2	SHEET 1:1

2

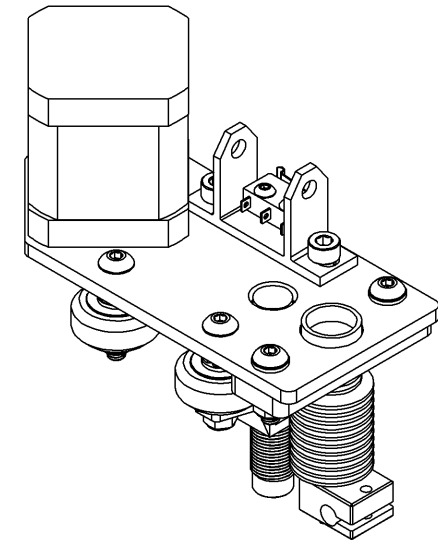
1

2

1



18	PX-009	SENSOR MOUNT	1
17	H-008	M5x20 BUTTON HEAD	2
16	H-025	M5x35 BUTTON HEAD	2
15	H-013	M3x10 BUTTON HEAD	6
14	H-014	SOLID V WHEEL KIT	4
13	H-011	M5 FLAT WASHER	10
12	H-010	M5x30 BUTTON HEAD	2
11	H-003	6mm ALUMINUM SPACER	2
10	H-002	ECCENTRIC SPACER	2
9	H-012	M5x.8 NYLON INSERT LOCKNUT	7
8	E-004	ENDSTOP SWITCH	1
7	PX-008	DRAG CHAIN BASE	1
6	PX-007	GROOVE MOUNT PLATE	1
5	E-003	INDUCTIVE SENSOR	1
4	M-003	e3D v6 BOWDEN	1
3	M-001	GT2 20 TOOTH PULLEY	1
2	E-001	NEMA 17 STEPPER MOTOR	1
1	X-001	CARRIAGE PLATE	1
ITEM NO.	PART NUMBER	DESCRIPTION	QTY.



TITLE:

hot end assembly

SIZE

A

DWG. NO.

X-103

REV

ADRAWN
A. S.DATE
5/11/16

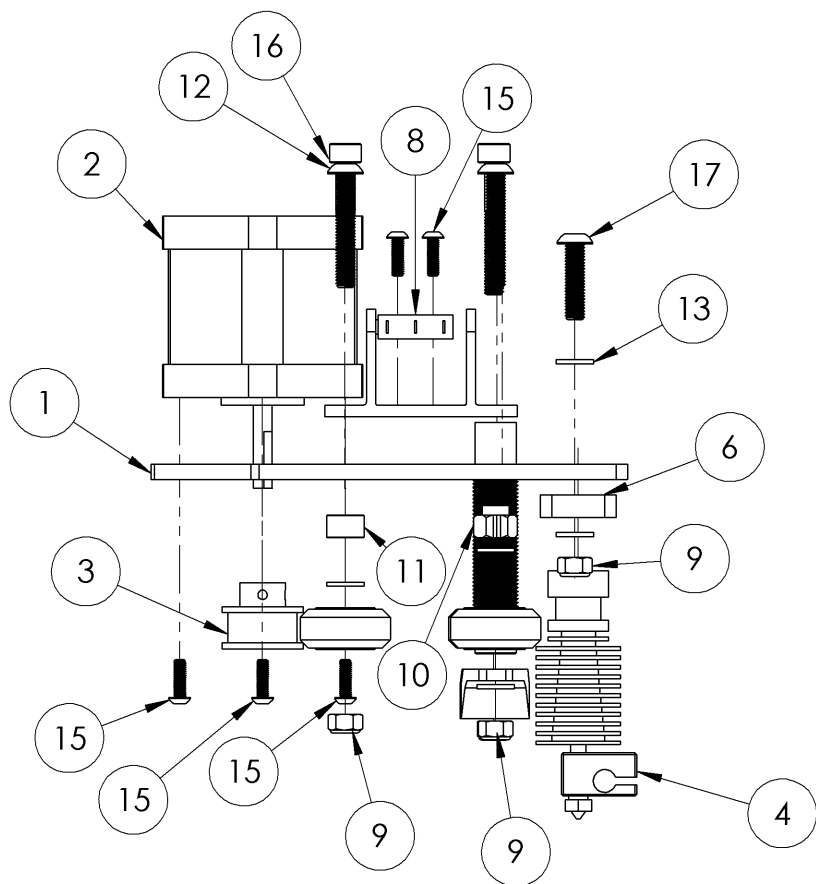
SCALE: 1:2

SHEET 1:2

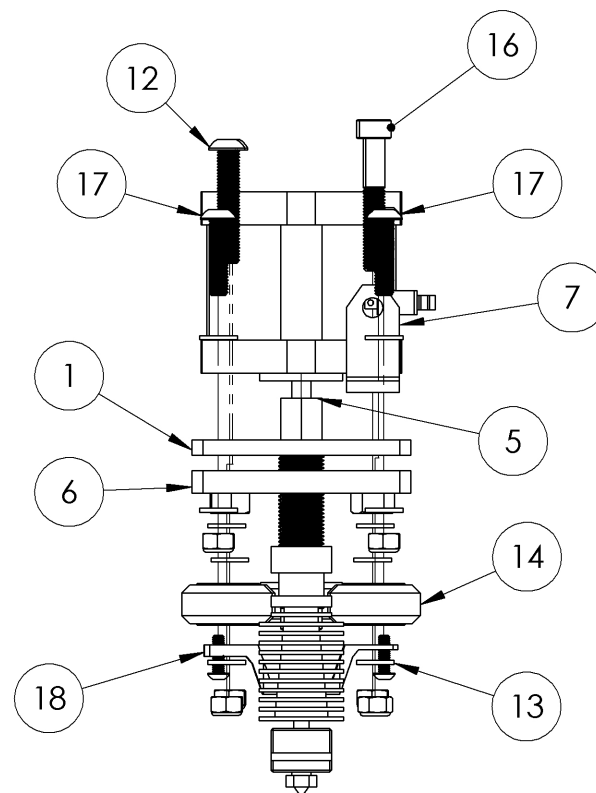
2

1

B

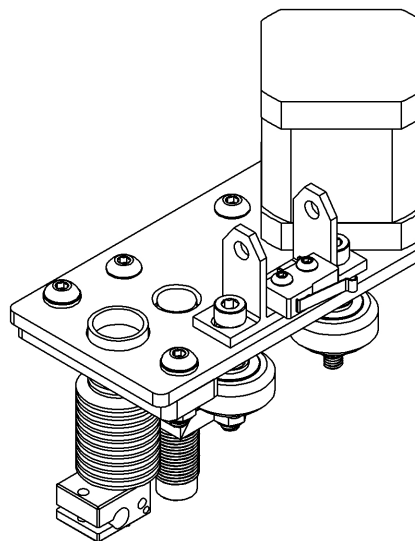


1



B

A



A

TITLE:

hot end
assembly

SIZE

A

DWG. NO.

X-103

REV

A

DRAWN
A. S.DATE
5/11/16

SCALE: 1:2

SHEET 2:2

2

1