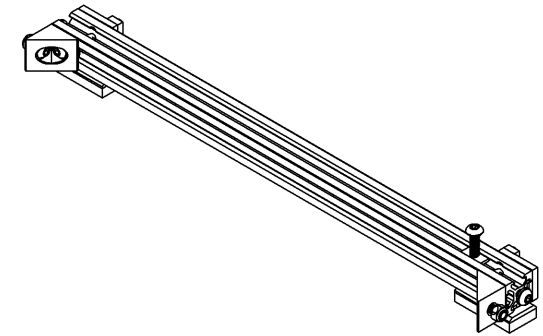


B



B

17	H-015	DROP IN M5 T-NUT	2
16	H-016	M5 HEX NUT	2
15	H-013	M3x10 BUTTON HEAD	4
14	H-004	M5x8 BUTTON HEAD	2
13	H-005	M5x10 BUTTON HEAD	2
12	H-007	M5x16 BUTTON HEAD	2
11	H-011	M5 FLAT WASHER	4
10	H-012	M5x.8 NYLON INSERT LOCKNUT	2
9	H-006	M5x12 BUTTON HEAD	6
8	H-008	M5x20 BUTTON HEAD	1
7	H-001	M5 T-NUT	7
6	PX-006	ANGLE CONNECTOR	2
5	PX-005	Z NUT TRAP STOPPER	2
4	PX-004	Z NUT TRAP	2
3	PX-003	BELT CLAMPER	2
2	PX-002_rB	BELT CLAMP BASE	2
1	X-003	V-SLOT	1
ITEM NO.	PART NUMBER	DESCRIPTION	QTY.



A

TITLE:

extrusion assembly

SIZE

A

DWG. NO.

X-101

REV

ADRAWN
A. S.DATE
5/11/16

SCALE: 1:2

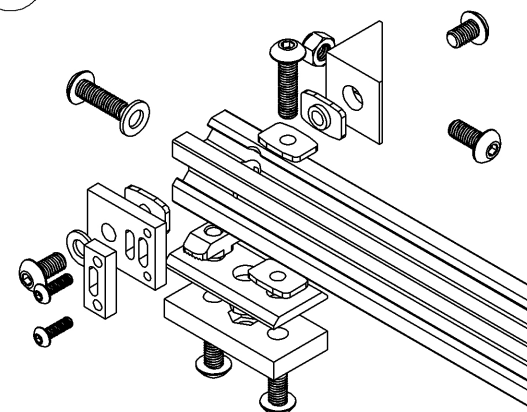
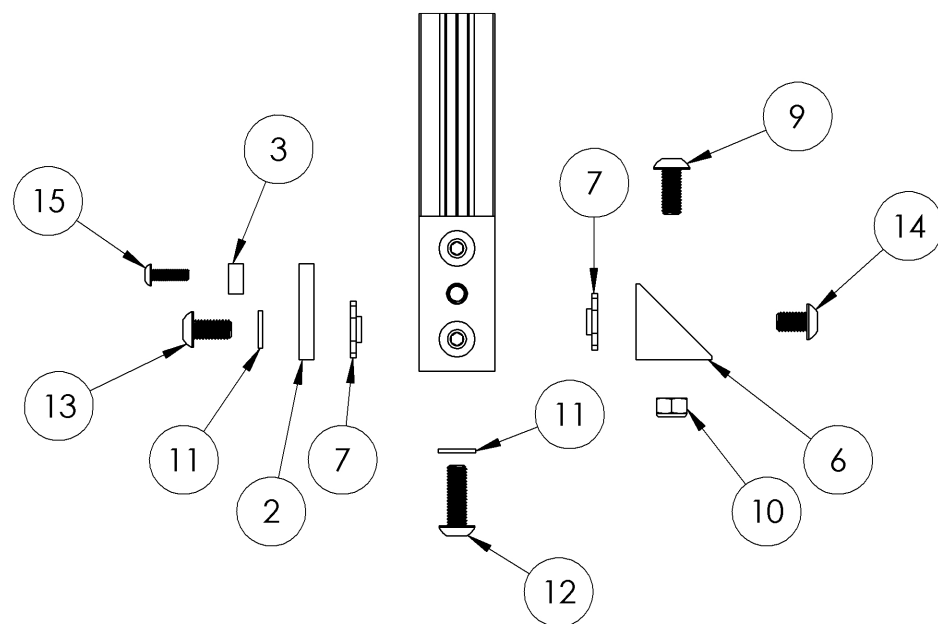
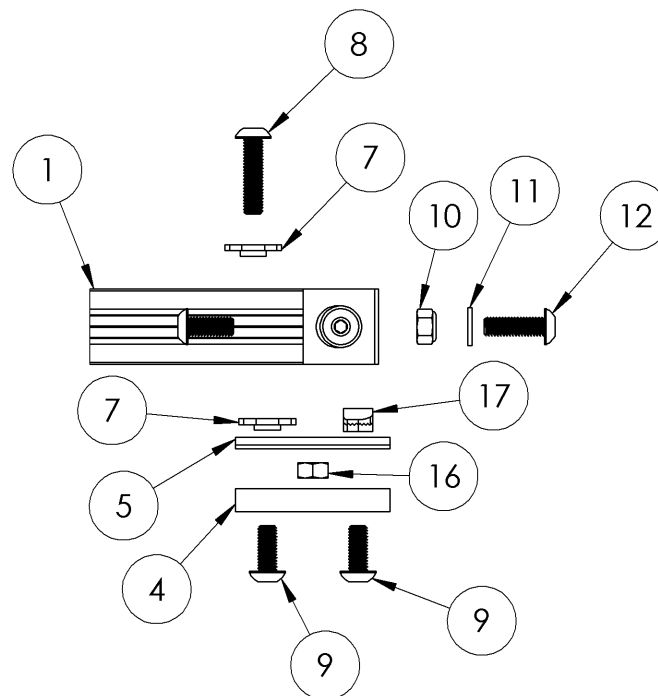
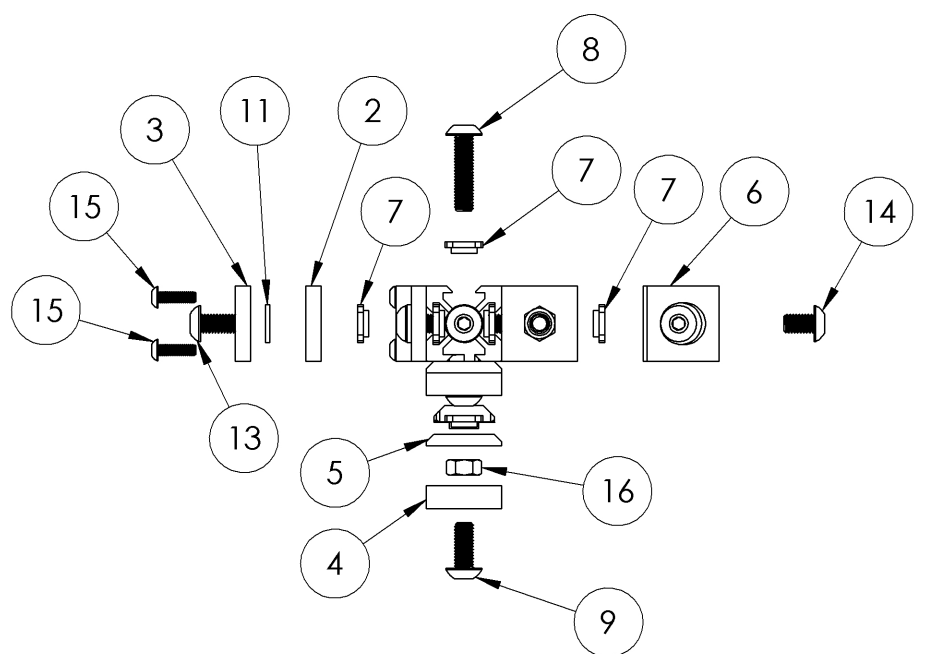
SHEET 1:2

2

1

B

B



A

TITLE: extrusion assembly			
SIZE A	DWG. NO. X-101		REV A
DRAWN A. S.	DATE 5/11/16	SCALE: 1:2	SHEET 2:2

2

1