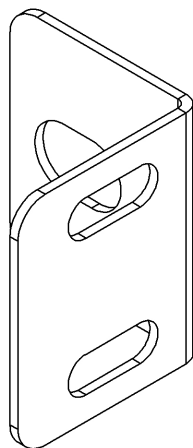
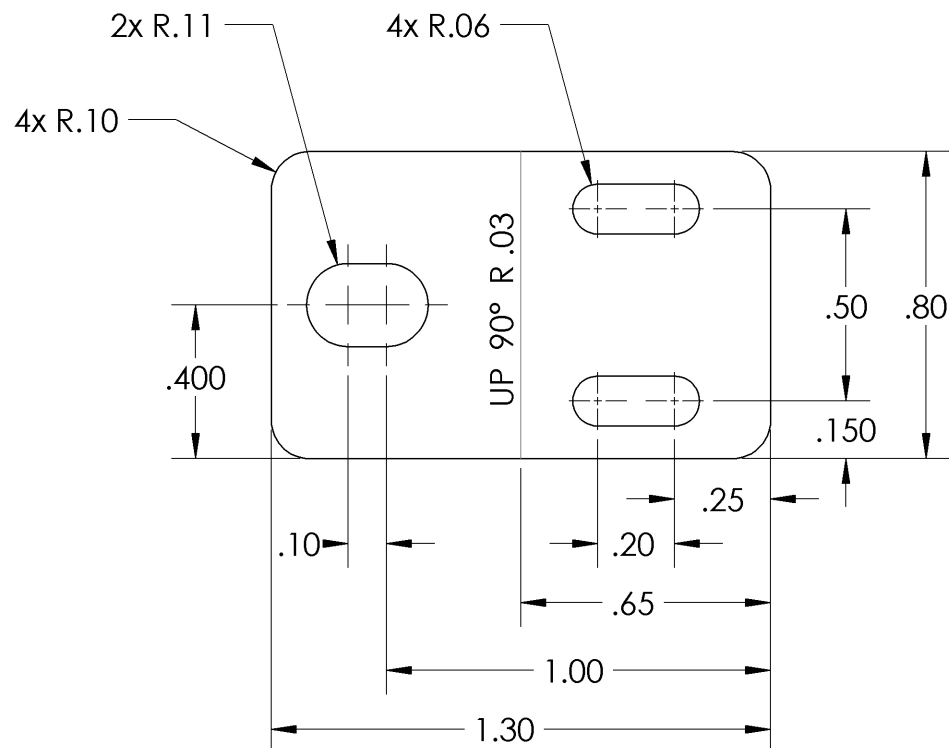


2

1

B

B



NOTES:

- 1) Laser cut from 22 gauge mild steel
- 2) Smaller slot to be used with M3 screws
- 3) Larger slot to be used with M5 screws

UNLESS OTHERWISE SPECIFIED:
DIMENSIONS ARE IN INCHES

TOLERANCES:
DECIMALS:
.XX±0.01
.XXX±0.001

ANGLES:
X°±1°

TITLE:

idler mount

DRAWN
A. SCHNEIDER

DATE
4/10/16

MATERIAL
22 GAUGE MILD STEEL

SIZE

A

DWG. NO.

Y-001

REV

A

DO NOT SCALE DRAWING

SCALE: 2:1

SHEET 1:1

2

1

A

A