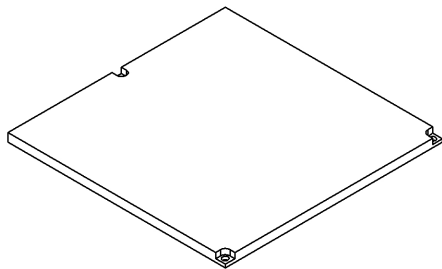


B

B

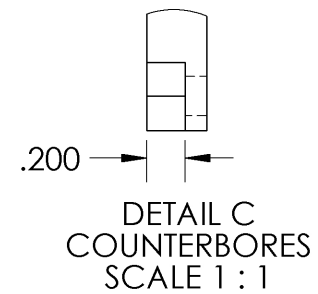
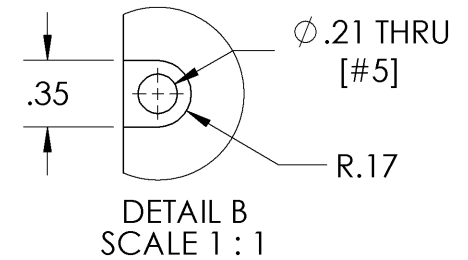
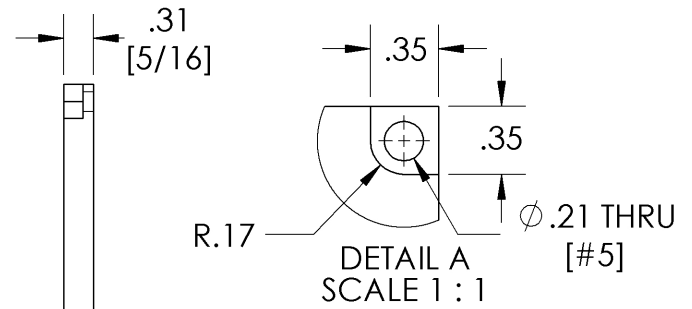
8.00
7.820

4.000

.180
00
.1802x 7.820
8.00

2

1



NOTES:

- 1) Use #5 drill for thru holes
- 2) Use a flat end mill for counterbores
- 3) All counterbores have same depth

UNLESS OTHERWISE SPECIFIED:
DIMENSIONS ARE IN INCHESTOLERANCES:
DECIMALS: .XX±.01
.XXX±.005ANGLES:
X°±1°

TITLE:

build plate

DRAWN
A. SCHNEIDERDATE
4/19/2016MATERIAL
MIC6 ALUMINUM

SIZE

A

DWG. NO.

Y-003

REV

A

DO NOT SCALE DRAWING

SCALE: 1:2

SHEET 1:1

1

A